

# OPTIONAL COMPONENT SCHEME (2-ROOM FLEXI FLATS)

The Optional Component Scheme (OCS) provides convenience for flat buyers, and is offered on an opt-in basis. Choose the OCS items you want before your flat selection appointment. The cost of the OCS items will be added to the selling price of the selected flat.

The 2-room Flexi flats come in 2 sizes: 36sqm and 45sqm, and are available either on a 99-year lease or short-lease.

All 2-room Flexi flats come with:

- floor finishes in the kitchen, household shelter and bathroom
- wall tiles in the kitchen and bathroom
- sliding partition/ door for bedroom; folding bathroom door
- water closet suite in the bathroom



Grab bars will be installed for all short-lease flats to assist elderly buyers in moving around the flats

## FOR ALL 2-ROOM FLEXI FLATS

### PACKAGE 1

- Flooring in the living/ dining room and bedroom
- 3-panel sliding partition, separating the living room and bedroom (for 36sqm 2-room Flexi flat only)

Note:

*Those who opted out of Package 1 will be provided with a 2-panel sliding partition and short wall separating living room and bedroom.*



3-panel sliding partition



2-panel sliding partition

### PACKAGE 2

- Sanitary fittings, i.e. washbasin with tap mixer and shower set with bath/ shower mixer



*Disclaimer: All displays and images shown here are strictly for reference only and are subject to change without notice. The displays and images shown here are conceptual and indicative only and the colour schemes, design, dimensions, type, tonal differences and specifications may differ from the actual fittings installed in the flat.*

November 2017

# OPTIONAL COMPONENT SCHEME (2-ROOM FLEXI FLATS)

FOR SHORT-LEASE 2-ROOM FLEXI FLATS ONLY

**PACKAGE 3** offers elderly buyers the convenience of having a flat in move-in condition. It comprises:

## ELDERLY-FRIENDLY FITTINGS



- Built-in kitchen cabinets with induction hob and cooker hood, kitchen sink, tap and dish drying rack.



Here are some features of an induction hob:

- It does not produce an open flame
- Its cooking zone cools down faster
- It is easier to clean than a gas hob
- As it has a flat surface, pots placed on an induction hob are less likely to topple over.

With these features, the use of the induction hob would promote a safer and cleaner environment.



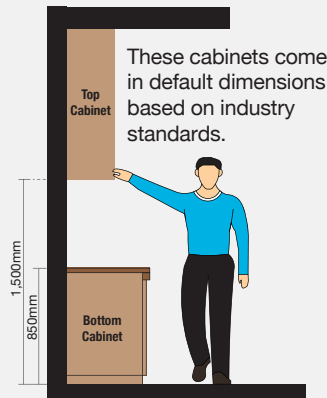
- Kitchen cabinets come with mobile cabinets to provide knee space (especially for wheelchair users)

- Built-in bedroom wardrobe with a lower clothes hanging rod for easy reach

- An option to have a lower counter top height

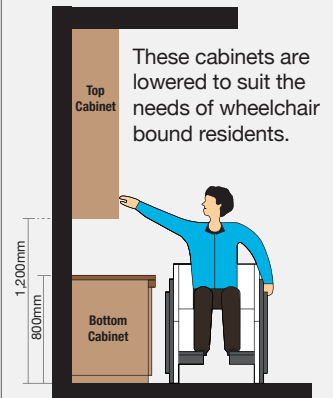
### Option A (Default):

- Bottom Cabinet at 850mm height (from floor level)
- Top Cabinet at 1,500mm height (from floor level)



### Option B:

- Bottom Cabinet at 800mm height (from floor level)
- Top Cabinet at 1,200mm height (from floor level)



Note: This drawing is not drawn to scale. All dimensions are approximate only.

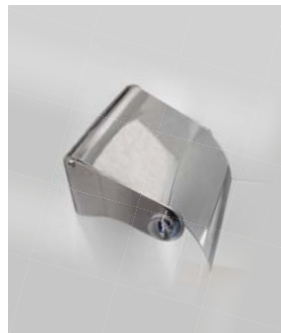
## OTHER FITTINGS



- Window grilles for safety and security



- Mirror



- Toilet roll holder



- Lighting (whole unit)



- Water heater

**Buyers who opt for Package 3 must select Package 1.**

*Disclaimer: All displays and images shown here are strictly for reference only and are subject to change without notice. The displays and images shown here are conceptual and indicative only and the colour schemes, design, dimensions, type, tonal differences and specifications may differ from the actual fittings installed in the flat.*

November 2017